

Centre Number						Candidate Number				
Surname										
Other Names										
Candidate Signature										

For Examiner's Use	
Examiner's Initials	
Question	Mark
1	
2	
3	
4	
5	
6	
TOTAL	



General Certificate of Secondary Education  
June 2011

# Home Economics: Child Development

**45801**

**Unit 1 Written Paper**

**Friday 10 June 2011 1.30 pm to 3.00 pm**

You will need no other materials.

### Time allowed

- 1 hour 30 minutes

### Instructions

- Use black ink or black ball-point pen.
- Fill in the boxes at the top of this page.
- Answer **all** questions.
- You must answer the questions in the spaces provided. Do not write outside the box around each page or on blank pages.
- Do all rough work in this book. Cross through any work you do not want to be marked.

### Information

- The marks for questions are shown in brackets.
- The maximum mark for this paper is 100.
- You are reminded of the need for good English and clear presentation in your answers. Quality of Written Communication will be assessed in answers written in continuous prose.



J U N 1 1 4 5 8 0 1 0 1

M/Jun11/45801

**45801**

Answer **all** questions in the spaces provided.

1 (a) Name the family types shown below.



© Getty Images

.....

(1 mark)



© Getty Images

.....

(1 mark)

1 (b) Some children are 'looked after' by the local authority.

Give **three** reasons why children might be in local authority care.

.....  
.....  
.....  
.....  
.....  
.....

(3 marks)



1 (c) Suggest **three** ways that the roles of men and women in the family have changed.

.....  
.....  
.....  
.....  
.....

(3 marks)

1 (d) Identify **two** ways that having a baby might change the parents' lifestyle.

.....  
.....  
.....  
.....

(2 marks)

1 (e) Grandparents have been called the unofficial childminders of Britain.

Give **three** advantages of using grandparents as childminders.

.....  
.....  
.....  
.....  
.....  
.....

(3 marks)

1 (f) What is Sure Start?

.....  
.....

(2 marks)

Turn over ▶



1 (g) Suggest **two** ways that Sure Start Children’s Centres can help to support families with young children.

.....  
.....  
.....  
.....

(2 marks)

1 (h) Describe how having a child with special needs might affect other members of the family.

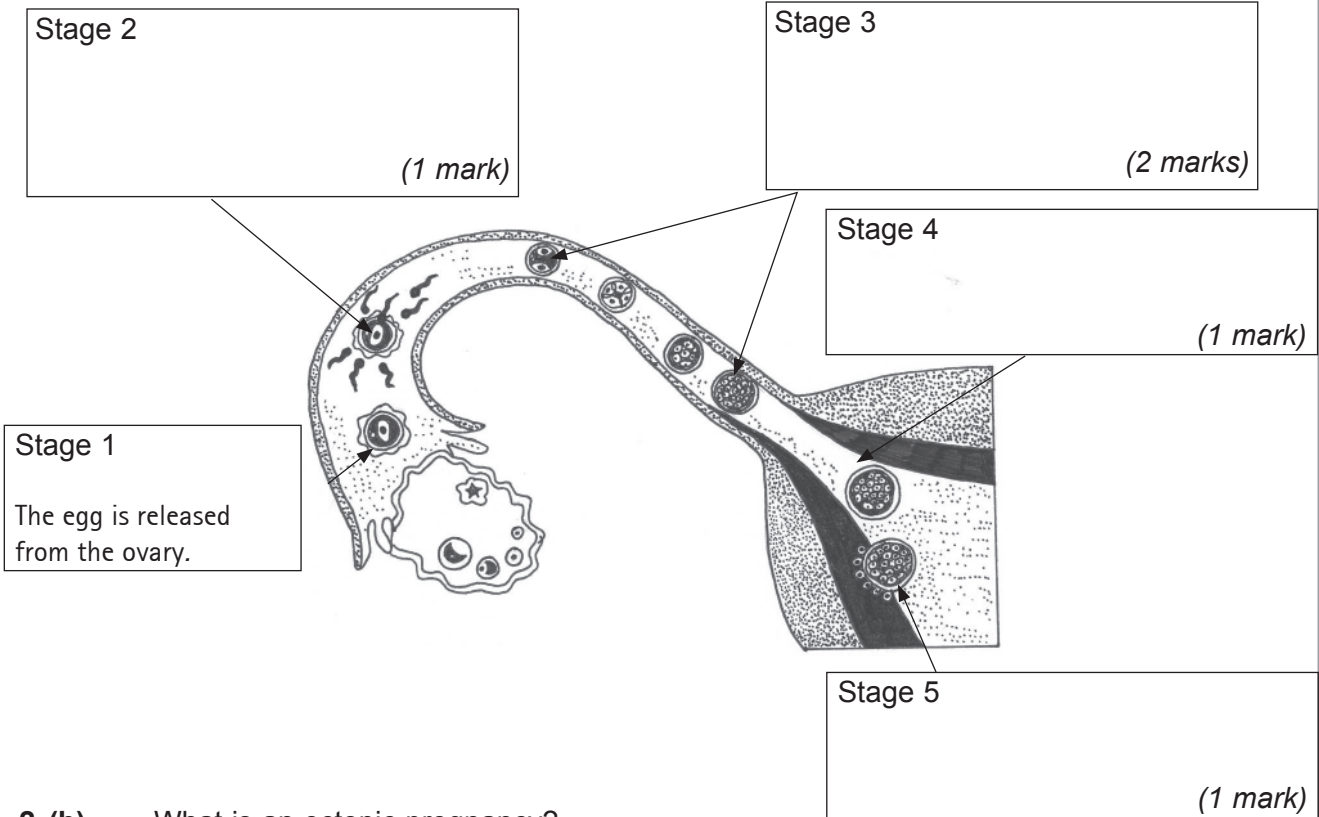
.....  
.....  
.....  
.....  
.....  
.....  
.....  
.....  
.....  
.....  
.....  
.....  
.....  
.....  
.....  
.....

(6 marks)

23



**2 (a)** The diagram below shows what happens during conception. Complete the labels on the diagram to show what happens at each stage. The first stage has been done for you.



**2 (b)** What is an ectopic pregnancy?

.....  
 .....  
 (1 mark)

**2 (c)** Different tests are carried out as part of antenatal care.



© Getty Images

**2 (c) (i)** Name the test shown in the picture above.

.....  
 (1 mark)

Turn over ▶



2 (c) (ii) Give **three** pieces of information this test can provide.

- 1 .....
  - 2 .....
  - 3 .....
- (3 marks)*

2 (d) What is the average weight of a newborn baby?

.....  
*(1 mark)*

2 (e) Premature babies often need to spend time in a Neo-Natal/Special Care Baby Unit.

Explain how the following pieces of equipment can help in the care of premature babies.



© Getty Images

An incubator.....  
.....  
.....  
.....  
*(2 marks)*



© Getty Images

A nasogastric tube.....  
.....  
.....  
*(2 marks)*



2 (f) Describe the main differences between post-natal depression and baby blues.

.....  
.....  
.....  
.....

(2 marks)

2 (g) Suggest **four** possible signs of post-natal depression.

1.....  
.....  
2.....  
.....  
3.....  
.....  
4.....  
.....

(4 marks)

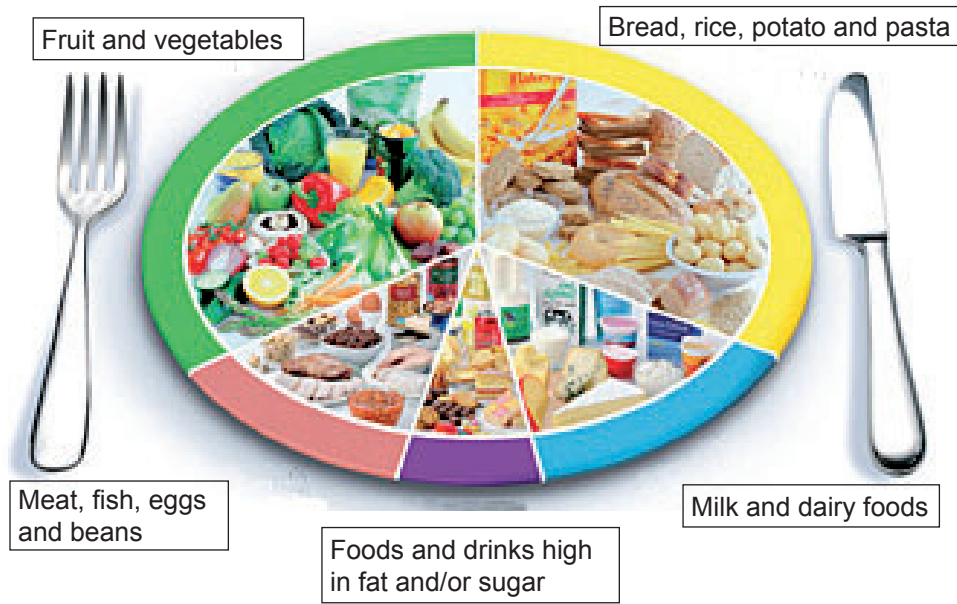
21

Turn over for the next question

Turn over ▶



- 3 The *eatwell plate* shows how much of each food group is needed for a healthy diet.



- 3 (a) (i) Which group of foods should be eaten in the smallest amount?

.....  
(1 mark)

- 3 (a) (ii) Give **two** reasons why foods in this group should be eaten in small amounts.

.....  
.....  
(2 marks)

- 3 (b) Which group of foods is the main source of protein?

.....  
(1 mark)

- 3 (c) Why is it important for young children to drink milk and eat dairy products?

.....  
.....  
(1 mark)





3 (d) Many parents choose to buy ready-made baby foods.



© Getty Images

Compare the advantages of using ready-made baby foods with home-cooked baby foods.

.....

.....

.....

.....

.....

.....

.....

.....

.....

.....

.....

.....

.....

.....

.....

.....

(6 marks)

11




Turn over ▶



**4 (a)** Logos on product labels can help parents when they buy clothes, equipment, toys and food for babies and young children.

Complete the table below to show:

- one item you might find the logo on
- the information the logo gives parents.

Logo	Item	The information the logo gives parents
 <p>© BSI</p>	<p>(1 mark)</p>	<p>.....</p> <p>.....</p> <p>.....</p> <p style="text-align: right;">(1 mark)</p>
 <p>© BSI</p>	<p>(1 mark)</p>	<p>.....</p> <p>.....</p> <p>.....</p> <p style="text-align: right;">(1 mark)</p>
 <p>www.coeliac.org.uk</p>	<p>(1 mark)</p>	<p>.....</p> <p>.....</p> <p>.....</p> <p style="text-align: right;">(1 mark)</p>



4 (b) Complete the chart below to give

- **two** advantages of using reusable nappies
- **two** advantages of using disposable nappies.

Types of nappy	Advantages
<b>Reusable nappies</b>	<p>.....</p> <p>.....</p> <p>.....</p> <p>.....</p> <p>.....</p> <p style="text-align: right;">(2 marks)</p>
<b>Disposable nappies</b>	<p>.....</p> <p>.....</p> <p>.....</p> <p>.....</p> <p>.....</p> <p style="text-align: right;">(2 marks)</p>

4 (c) Children often catch infectious diseases.  
Give **two** ways that infectious diseases can be spread.

- 1.....
- 2.....
- (2 marks)

Turn over ▶



**5 (a)** Playgrounds and outdoor play areas can be dangerous for young children.

Suggest **five** safety checks that parents/carers should make when taking young children to a park or outdoor play area.

.....

.....

.....

.....

.....

.....

.....

.....

.....

.....

*(5 marks)*

**5 (b)** Give **four** points to consider when you buy books for babies and young children.

.....

.....

.....

.....

*(4 marks)*



**5 (c)** Pre-reading skills are vital for children to help them learn to read.  
Describe **two** of these skills.

.....

.....

.....

.....

(2 marks)

**5 (d)** Bookstart is a programme to promote a love of books.  
Explain how Bookstart can help families to encourage young children to learn to read.

.....

.....

.....

.....

.....

.....

.....

.....

.....

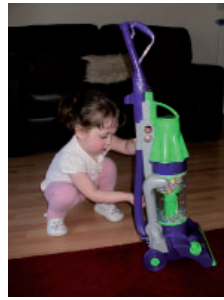
(4 marks)

**Question 5 continues on the next page**

**Turn over ▶**



5 (e) Technology is a big part of everyday life.



© Getty Images

Describe how toys can help babies and young children to develop technology skills and understanding.

.....

.....

.....

.....

.....

.....

.....

.....

.....

.....

.....

.....

.....

.....

.....

.....

.....

.....

.....

.....

.....

.....

(6 marks)

21



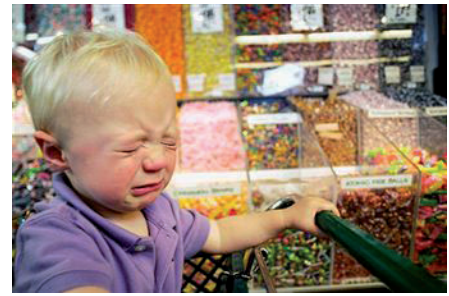
6 Socialisation is about learning the social skills and behaviour needed for children to interact with other people.



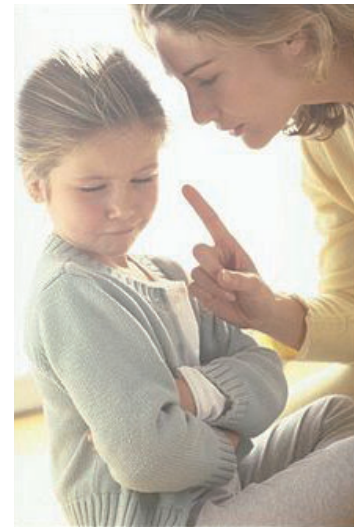
© Getty Images



© Getty Images



© Getty Images



© Getty Images

Describe the social skills and behaviour children need to learn.  
Explain why they are important.  
Suggest different ways that parents/carers can encourage the development of these skills.

.....  
.....  
.....  
.....  
.....  
.....  
.....  
.....  
.....  
.....

Turn over ▶



A large rectangular box containing 25 horizontal dotted lines for writing.







**There are no questions printed on this page**

**DO NOT WRITE ON THIS PAGE  
ANSWER IN THE SPACES PROVIDED**



**There are no questions printed on this page**

**DO NOT WRITE ON THIS PAGE  
ANSWER IN THE SPACES PROVIDED**



**There are no questions printed on this page**

**DO NOT WRITE ON THIS PAGE  
ANSWER IN THE SPACES PROVIDED**

Permission to reproduce the Kitemark and age warning logos is granted by BSI British Standards can be obtained in PDF formats from BS on line shop: [www.bsigroup.com/shop](http://www.bsigroup.com/shop) or by contacting BSI Customer Services for hard copies only: Tel +44(0)20 8996 9001, Email: [CServices@bsigroup.com](mailto:CServices@bsigroup.com)

Copyright © 2011 AQA and its licensors. All rights reserved.

